

MAJOR SERVICE: PREVENTATIVE MAINTENANCE & INSPECTION

A factory trained service representative of Foley Power Systems will visit your installation on a mutually agreed date and time. All work will be performed in a safe manner and the work area will be left in a neat and clean condition.

The following inspections, maintenance and operational checks will be performed.

Starting System

- ✓ Clean batteries and cables (lead acid)
- ✓ Test and record specific gravity (lead acid)
- ✓ Record voltage readings (nickel cadmium)
- ✓ Check for proper starter operation
- ✓ Check starter amperage
- ✓ Load test the battery set

Fuel System

- ✓ Check engine and supply systems for any fuel leaks
- ✓ Check operation of day tank pump and float switch
- ✓ Check electrical and piping connections to day tank
- ✓ Check fuel pressure gauge for proper pressure
- ✓ Inspect fuel water separator element condition
- ✓ Replace engine mounted fuel filters

Exhaust System

- ✓ Inspect exhaust silencer (where possible), flexible connections and exhaust piping
- ✓ Visually inspect exhaust outlet for excessive smoking
- ✓ Visually check crankcase breather for excessive smoking

AC Power Generator

- ✓ Make general inspection of all electrical connections on regulator and generator
- ✓ Inspect generator brushes, slip rings, stator, lead slice and circuit breaker (if applicable)
- ✓ Grease bearing if necessary
- ✓ Check operation of voltage regulator and adjust at customers request

Battery Charging System

- ✓ Check battery trickle charger for proper operation
- ✓ Check battery charging alternator for proper output
- ✓ Check and tighten all battery connections
- ✓ Check electrolyte level and fill as needed

Cooling System

- ✓ Check coolant level
- ✓ Check for proper amount of anti-freeze and conditioner
- ✓ Check radiator core for obstructions or build up of foreign matter
- ✓ Check general condition of engine coolant
- ✓ Check all belts for wear and proper tensioning
- ✓ Check all hoses for cracks or brittleness
- ✓ Check jacket water heater and thermostats for proper operation
- ✓ Take coolant sample & send to analysis lab

Speed Control System

- ✓ Check governor rods or linkages for loose or worn parts
- ✓ Check governor operation under load
- ✓ Check and tighten any loose wiring connections and note any potential problems

Engine Control Panel

- ✓ Inspect all electrical connections and tighten when necessary
- ✓ Check operation of relay
- ✓ Thoroughly clean control panel
- ✓ Replace any indicator lights that are not illuminating
- ✓ Inspect for any blown fuses
- ✓ Check operation of main circuit breaker and leave in ready (auto) position

Lube Oil System

- ✓ Check oil level
- ✓ Check oil engine pressure
- ✓ Take lubricating oil sample & send to analysis lab
- ✓ Replace engine lubricant and lubricant filters. Dispose of any waste fluids in an EPA approved manner

Air Intake System

- ✓ Inspect air cleaner condition
- ✓ Check turbocharger for excessive end play
- ✓ Listen for any unusual noises from this area
- ✓ Check air intake louvers for proper operation
- ✓ Insure that air intake flow is not unduly restricted

Safety System

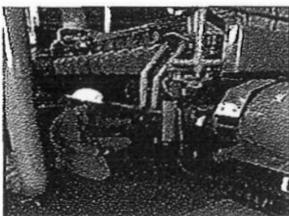
- ✓ Test over speed device
- ✓ Test water temperature contactor
- ✓ Test lube oil pressure contactor
- ✓ Test over crank device
- ✓ Check out any and all additional safety devices that we are aware of that may cause engine damage in the event of a failure

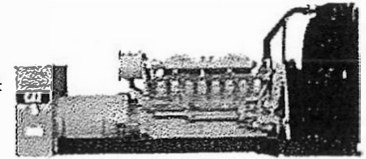
General

- ✓ Carefully inspect engine for wear and deterioration
- ✓ Make note of any unusual sounds during walk around inspection
- ✓ Check voltage and frequency
- ✓ During Test Run Record the Following
 - ✓ Lube oil pressure
 - ✓ Water Temperature
 - ✓ Frequency
 - ✓ Current (all three phases)
 - ✓ Voltage (all three phases)
 - ✓ Kilowatts

Report

Inspection Report will be completed and given to the customer after each visit, providing you with the needed documentation. Quotes for recommended repairs will be given to the customer upon request.





MINOR SERVICE: COMPREHENSIVE INSPECTION ONLY

A factory trained service representative of Foley Power Systems will visit your installation on a mutually agreed date and time. All work will be performed in a safe manner and the work area will be left in a neat and clean condition.

The following inspections, maintenance and operational checks will be performed.

Starting System

- ✓ Clean batteries and cables (lead acid)
- ✓ Test and record specific gravity (lead acid)
- ✓ Record voltage readings (nickel cadmium)
- ✓ Check for proper starter operation
- ✓ Check starter amperage
- ✓ Load test the battery set

Fuel System

- ✓ Check engine and supply systems for any fuel leaks
- ✓ Check operation of day tank pump and float switch
- ✓ Check electrical and piping connections to day tank
- ✓ Check fuel pressure gauge for proper pressure
- ✓ Inspect fuel water separator element condition

Exhaust System

- ✓ Inspect exhaust silencer (where possible), flexible connections and exhaust piping
- ✓ Visually inspect exhaust outlet for excessive smoking
- ✓ Visually check crankcase breather for excessive smoking

AC Power Generator

- ✓ Make general inspection of all electrical connections on regulator and generator
- ✓ Inspect generator brushes, slip rings, stator, lead slice and circuit breaker (if applicable)
- ✓ Grease bearing if necessary
- ✓ Check operation of voltage regulator and adjust at customers request

Battery Charging System

- ✓ Check battery trickle charger for proper operation
- ✓ Check battery charging alternator for proper output
- ✓ Check and tighten all battery connections
- ✓ Check electrolyte level and fill as needed

Cooling System

- ✓ Check coolant level
- ✓ Check for proper amount of anti-freeze and conditioner
- ✓ Check radiator core for obstructions or build up of foreign matter
- ✓ Check general condition of engine coolant
- ✓ Check all belts for wear and proper tensioning
- ✓ Check all hoses for cracks or brittleness
- ✓ Check jacket water heater and thermostats for proper operation
- ✓ Take coolant sample & send to analysis lab

Speed Control System

- ✓ Check governor rods or linkages for loose or worn parts
- ✓ Check governor operation under load
- ✓ Check and tighten any loose wiring connections and note any potential problems

Engine Control Panel

- ✓ Inspect all electrical connections and tighten when necessary
- ✓ Check operation of relay
- ✓ Thoroughly clean control panel
- ✓ Replace any indicator lights that are not illuminating
- ✓ Inspect for any blown fuses
- ✓ Check operation of main circuit breaker and leave in ready (auto) position

Lube Oil System

- ✓ Check oil level
- ✓ Check oil engine pressure
- ✓ Take lubricating oil sample & send to analysis lab

Air Intake System

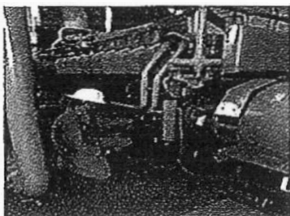
- ✓ Inspect air cleaner condition
- ✓ Check turbocharger for excessive end play
- ✓ Listen for any unusual noises from this area
- ✓ Check air intake louvers for proper operation
- ✓ Insure that air intake flow is not unduly restricted

Safety System

- ✓ Test over speed device
- ✓ Test water temperature contactor
- ✓ Test lube oil pressure contactor
- ✓ Test over crank device
- ✓ Check out any and all additional safety devices that we are aware of that may cause engine damage in the event of a failure

General

- ✓ Carefully inspect engine for wear and deterioration
- ✓ Make note of any unusual sounds during walk around inspection
- ✓ Check voltage and frequency
- ✓ During Test Run Record the Following
 - ✓ Lube oil pressure
 - ✓ Water Temperature
 - ✓ Frequency
 - ✓ Current (all three phases)
 - ✓ Voltage (all three phases)
 - ✓ Kilowatts



Report

Inspection Report will be completed and given to the customer after each visit, providing you with the needed documentation. Quotes for recommended repairs will be given to the customer upon request.

